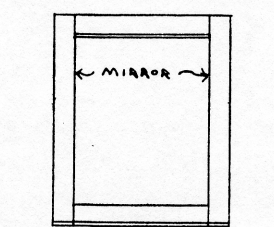
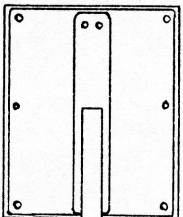


16 1/2"  
11"



BACK -

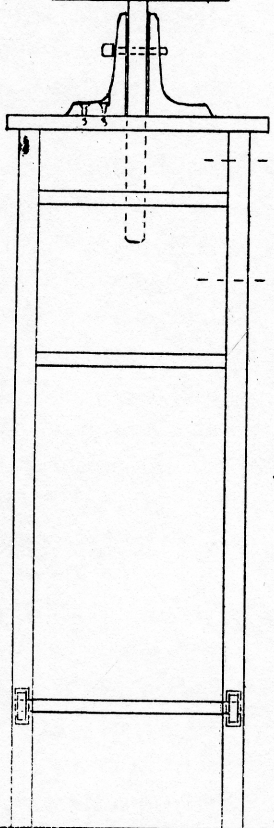
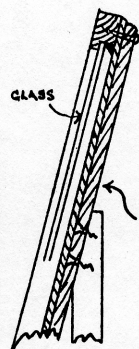


HOLE

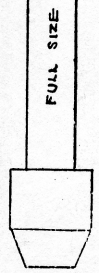
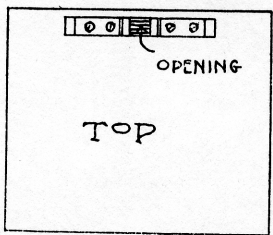
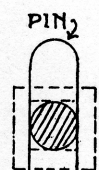
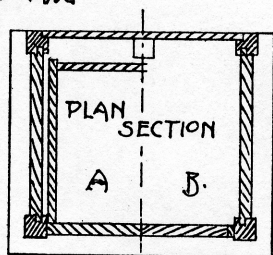
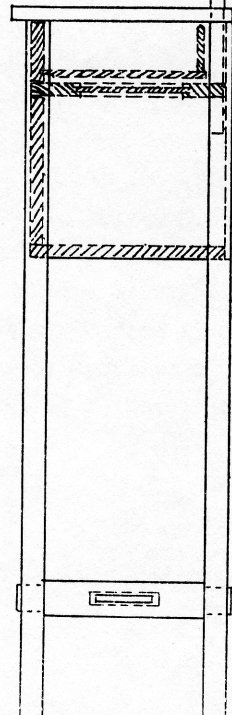
# DESIGN FOR A SHAVING STAND

SCALE OF INCHES  
0 3 6 9 12

ENLARGED DETAIL



A  
B  
45"



Drawer back	1	13 in.	3 1/4 in.	3/4 in.	3 in.	1/2 in.
Drawer bottom	1	13 in.	12 in.	1/2 in.	11 in.	3/8 in.
Shelf	1	15 in.	5 in.	7/8 in.	4 1/2 in.	3/4 in.
Stretchers	2	14 in.	2 1/2 in.	1 in.	2 1/4 in.	7/8 in.
Dust panel	1	8 in.	8 in.	5/8 in.	7 1/2 in.	1/2 in.
Dust panel rails	4	13 in.	3 1/4 in.	1 in.	3 in.	3/4 in.
Bottom	1	13 in.	13 in.	1 in.	12 1/2 in.	7/8 in.
Mirror stem	1	23 in.	1 1/2 in.	1 in.	1 1/4 in.	7/8 in.
Mirror frame rails	2	14 1/2 in.	1 1/2 in.	1 in.	1 1/4 in.	3/4 in.
Mirror frame rails	2	9 in.	1 1/2 in.	1 in.	1 1/4 in.	3/4 in.
Mirror frame back	1	14 in.	11 in.	1/2 in.	10 1/2 in.	1/4 in.
Strip on back	1	14 in.	2 1/2 in.	3/4 in.	2 1/4 in.	5/8 in.
Uprights	2	6 in.	4 in.	1 in.	Pattern	7/8 in.